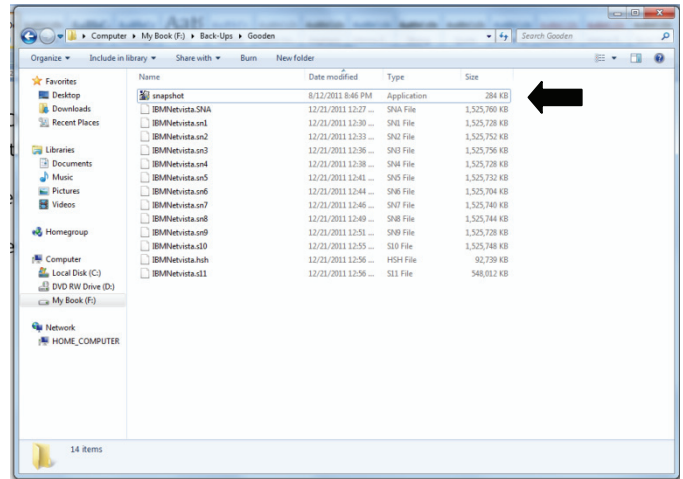


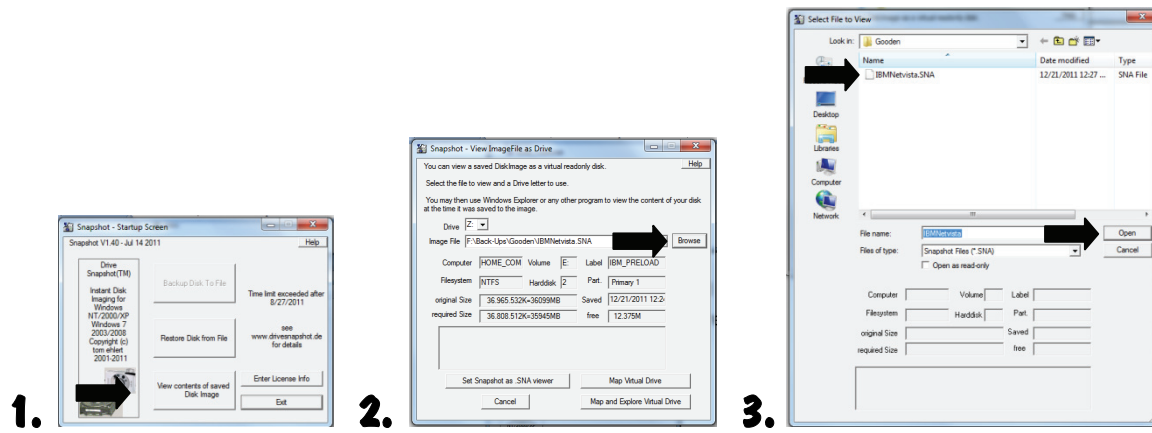
# Data Back-Up and Recovery Disks by Super Geek!

These disks were created using **Drive Snapshot**. Drive Snapshot is provided on the disks or a link can be found on <http://helpmesupergeek.com/support.html>

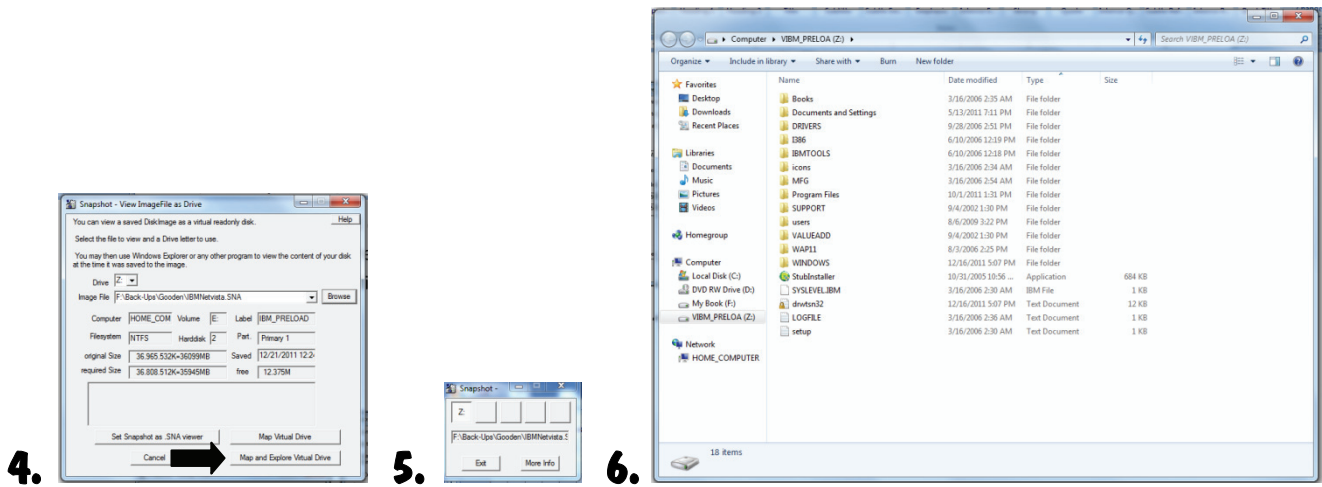
In order to view the backup, you must first copy all the data for the entire set of disks into a folder on a hard drive of a computer of your choosing (Windows Only). To the right is an example of what the files should look like.



You will need a substantial amount of hard drive space to do this. Once all the files are loaded onto the computer, run **Drive Snapshot** by double clicking it. 1. On the screen use **“View contents of a saved Disk Image.”** 2. On the next screen, select **“Browse.”** 3. Navigate to the folder you created and stored the files in looking for the main file, **“yourtitle.SNA.”**



Hit **“Open.”** 4. On the next screen, hit **“Map and Explore Virtual Drive.”** 5. The backup will be mounted as a drive letter in your computer and accessible via **“My Computer.”** This drive letter is usually toward the end of the alphabet. 6. Example below:



That's it! You can navigate and copy the files to any other destination your choice.

**Any other questions or problems with the disks, don't hesitate to call... Super Geek!**